

ANNUAL REPORT

2 0 1 9





LETTER FROM THE CEO

IMA WORLD HEALTH AND LUTHERAN WORLD RELIEF: STRONGER TOGETHER

New opportunities. Stronger programs. Greater impact.

IMA World Health and Lutheran World Relief joined forces this year, and the future looks brighter than ever – especially for ending the cycle of poverty, fostering healthier families and communities, and responding to more humanitarian crises.

We were close partners for nearly 60 years, so our union was as natural as it was strategic. Both organizations are leaders in their fields: IMA in public health in some of the world's most challenging environments, and Lutheran World Relief in rural livelihoods and emergency response.

Both organizations are financially robust. IMA World Health's annual revenue more than quadrupled over the last eight years, thanks to its deep technical expertise in public health and willingness to serve in exceptionally difficult environments. Lutheran World Relief continues to be generously supported by Lutheran donors and congregations throughout the U.S., putting their faith in action to help those in need, as well as by a diverse group of government, foundation and corporate funders.

Most importantly, our complementary fields of work minister to the whole person, leading not only to exponentially more impact, but also results that will endure. In short, as one organization, we can reduce poverty at the same time as improving communities' health.

Among immediate changes, I became our unified organization's president and CEO, and Rick Santos, who led IMA's astounding growth the past nine years, took on a new role as senior advisor during the transition. We combined our Leadership Teams and Boards of Directors. Dr. William Craft, who chaired the Lutheran World Relief Board, became the lead of the combined agency's Board.



Together, IMA World Health and Lutheran World Relief are pursuing new opportunities, implementing stronger programs and supporting deeper and more lasting results for the health and well-being of the individuals and communities we serve. Building on existing investments this year, we dug deeper into the more persistent and underlying challenges that were previously beyond our reach. We filled more gaps in service and provided preventive, rather than reactive, support for disease control and prevention. We lifted up local partners and strengthened local systems. We are excited to move forward together, uniting our expertise and our resources, to achieve greater impact.

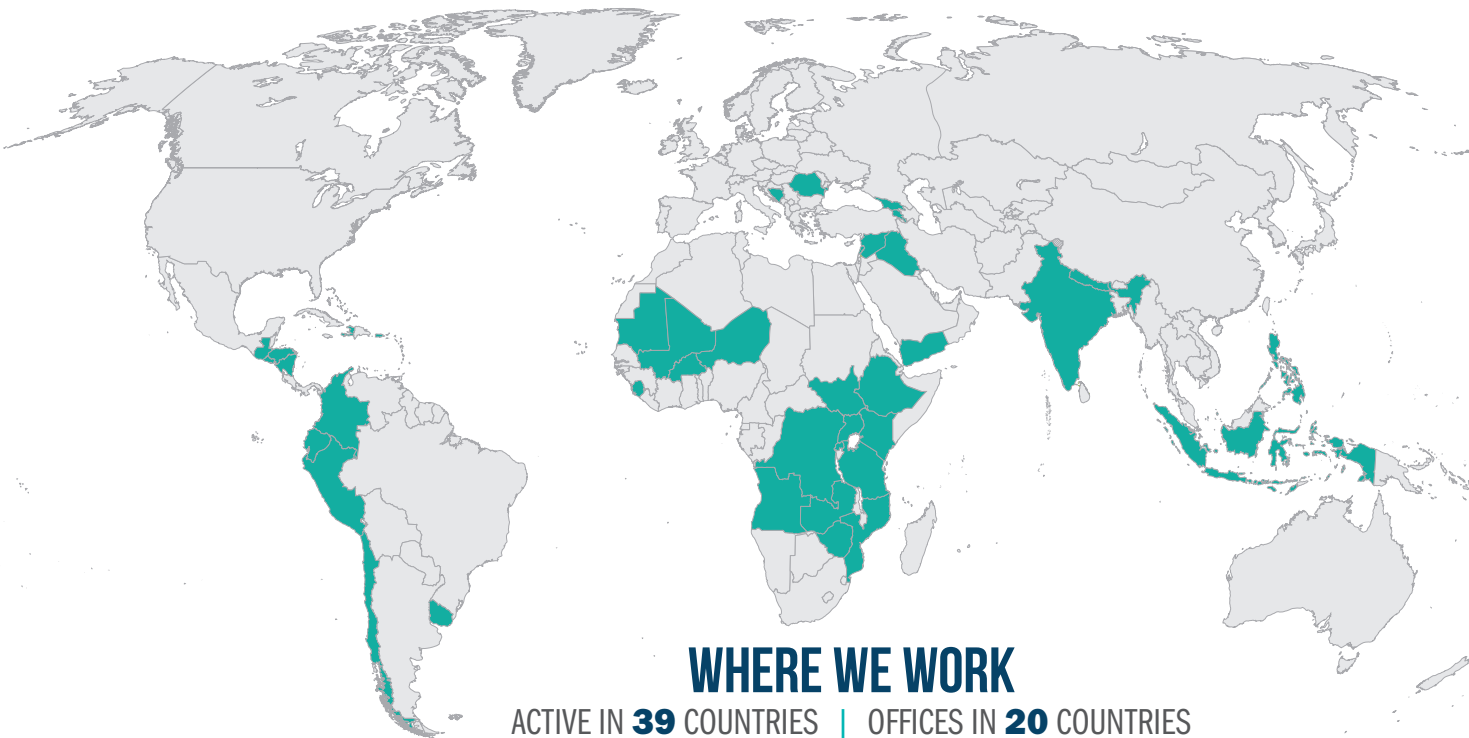
With thanks and in partnership,

**AMBASSADOR
DANIEL SPECKHARD**
President and CEO

IMA WORLD HEALTH and **LUTHERAN WORLD RELIEF** are international non-governmental organizations with 60 and 75 years of experience respectively in the humanitarian, international development, and public health sectors. After working closely with each other for over six decades, we officially joined forces in 2019 to expand our reach and services to those in need in the world's most challenging places. Together, we take a systemic approach to grow rural economies, eliminate extreme poverty, ensure access to

quality healthcare, and respond to urgent humanitarian needs and public health crises in fragile settings. We specialize in building local capacity to promote resilience and self-reliance and in collaborating and innovating with local partners and across disciplines to achieve transformative and scalable results.

This annual report is a collection of both IMA World Health's and Lutheran World Relief's data that provides a snapshot of our combined work worldwide in 2019.



AFRICA

-  BURKINA FASO*
- ETHIOPIA^{††}
- KENYA*[^]
-  MALI*
- NIGER*
- DEMOCRATIC REPUBLIC OF CONGO[^]
- SOUTH SUDAN[^]
-  TANZANIA*[^]
- UGANDA*
- ZIMBABWE

ASIA & MIDDLE EAST


- INDIA
- INDONESIA^{†*^}
-  IRAQ*
-  LEBANON*
- NEPAL*
- PHILIPPINES*
-  SYRIA
- YEMEN

LATIN AMERICA

- CHILE
- COLOMBIA*
-  DOMINICA
-  EL SALVADOR*
- ECUADOR
-  GUATEMALA
-  HAITI*[^]
-  HONDURAS*
-  NICARAGUA*
-  PERU*
- URUGUAY

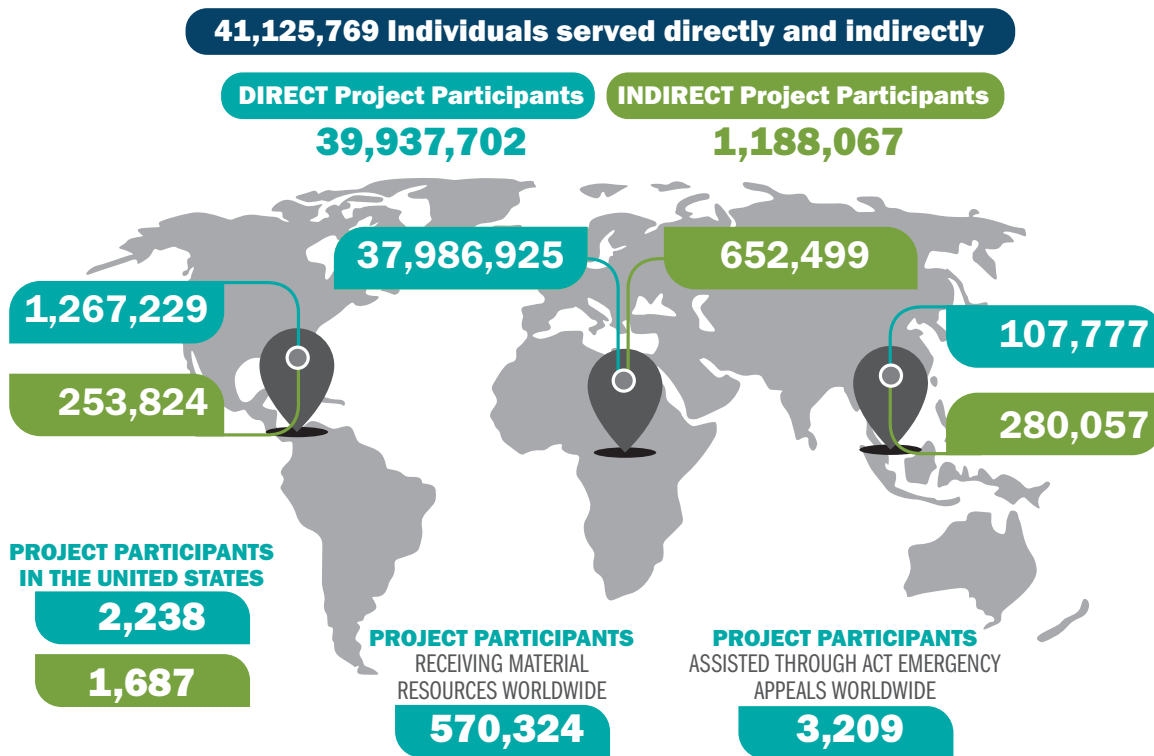
MATERIAL RESOURCE DISTRIBUTION

- ANGOLA
- ARMENIA
- BOSNIA HERCEGOVINA
- GEORGIA
- MAURITANIA
- MOZAMBIQUE
- RWANDA
- ROMANIA
- SIERRA LEONE
- ZAMBIA
- UNITED STATES

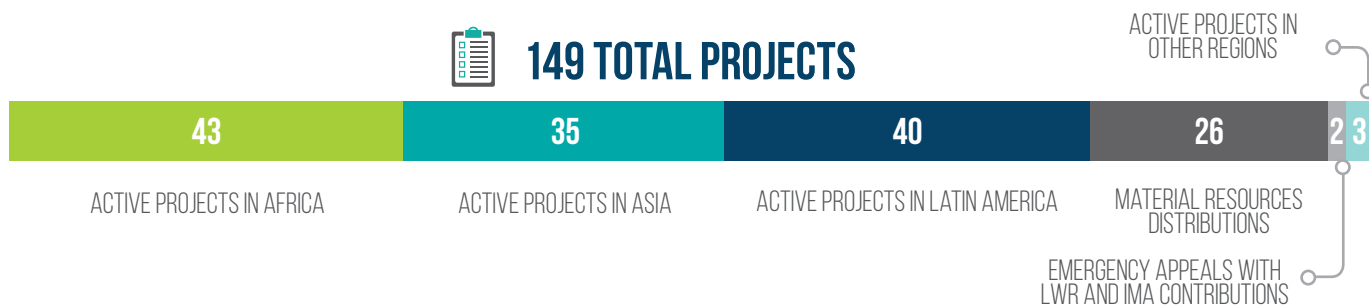
*Countries with LWR Office [^]Countries with IMA Office [†]ACT Appeal response in addition to program work ^{††}ACT Appeal only  Material Resource distribution in addition to program work

¹ Data contained in this report are from LWR's and IMA's fiscal year 2019, which runs October 2018 through September 2019, and refer to LWR's and IMA's work in the countries where we support projects or Material Resource distributions.

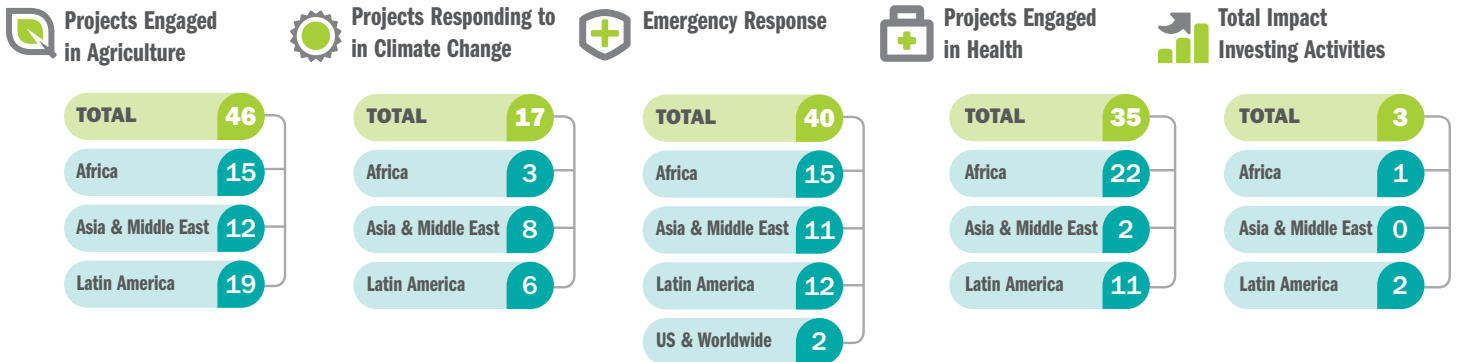
TOTAL NUMBER OF PEOPLE SERVED IN FY2019



PROJECTS ACTIVE IN FISCAL YEAR (FY) 2019



PROJECTS ACCORDING TO STRATEGIC OBJECTIVE

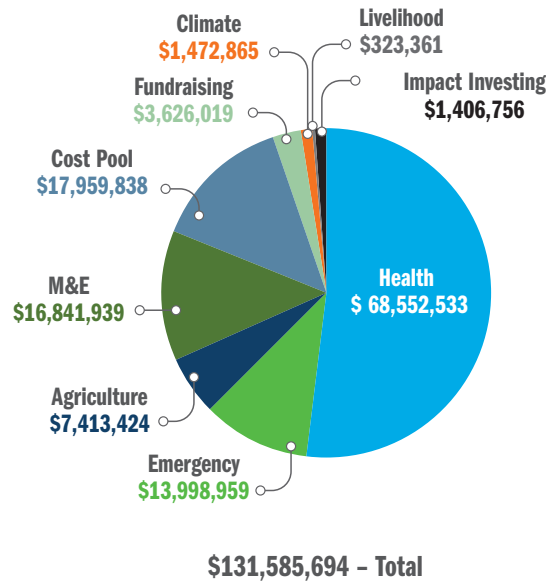


PARTNERS IMPLEMENTING PROJECTS IN FY2019

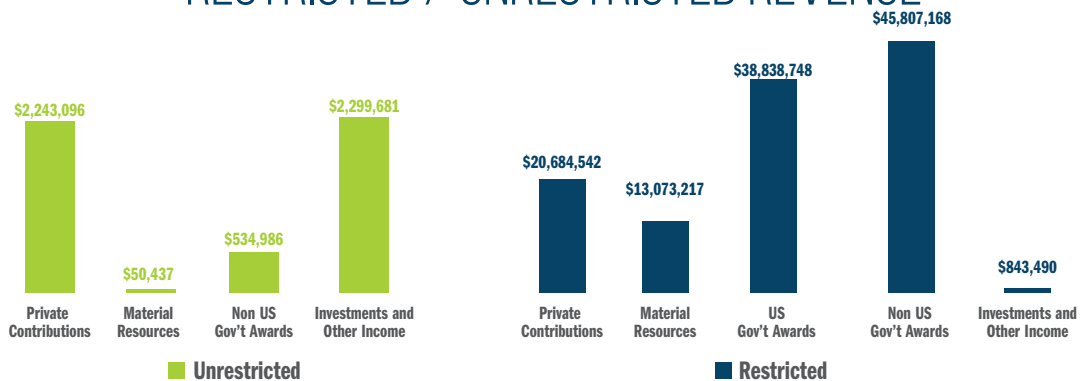


SPENDING BY SECTOR

Program Expenses by Category



RESTRICTED / UNRESTRICTED REVENUE





BOARD OF DIRECTORS

DR. WILLIAM J. CRAFT (CHAIR)

DR. GREGG SYLVESTER (VICE CHAIR)

THE REV. TIMOTHY RUNTSCH (SECRETARY)

HILDA (BAMBI) ARELLANO

DR. LOUISE EVENSON

JEAN HANSON

KENNETH JONES, II

REV. DR. DAVID LOSE

DR. KATHI TUNHEIM

MARTINE POLYCARPE

ABAGAIL NELSON

TAMRON KEITH

JEFF JORDAN

SONYA FUNNA EVELYN

PHILLIP ATKINS-PATTENSON



PO Box 17061
Baltimore, MD
21297-1061



1730 M Street, NW
Suite 1100
Washington, DC 20036